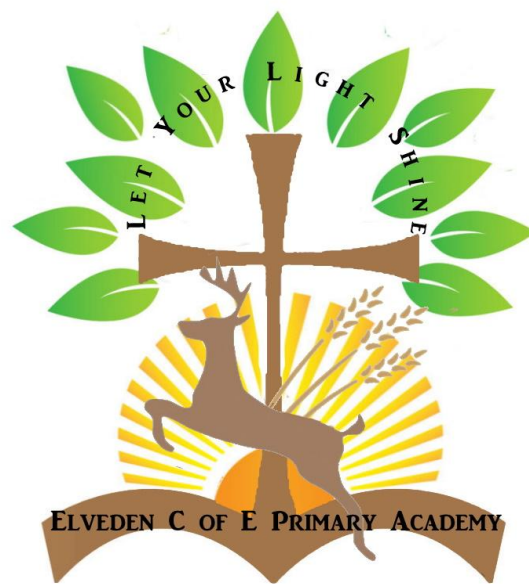


Spiritual, Moral, Social and Cultural Development



Elveden C of E Primary Academy

Enhancing Children's Spiritual Development at Elveden C of E Academy

The spiritual development of pupils is shown by their:

- Ability to be reflective about their own beliefs, religious or otherwise, that inform their perspective on life and their interest in and respect for different people's faiths, feelings and values;
- Sense of enjoyment and fascination in learning and taking care of themselves, others and the world around them;
- Use of imagination and creativity in their learning;
- Willingness to reflect on their experiences.

At Elveden Academy, children are encouraged to think deeply and reflect on their own religious beliefs as well as those of other faiths. Our classroom displays and reflection areas present and echo the importance we place upon Religious Education within our curriculum. Each classroom has space for a designated Reflection Area in which the children regularly access, engaging with the interactive aspects integrated within the displays. Each classroom also poses 'big questions', not only for children to ponder over but also to encourage pupils to pose big questions of their own. This develops pupil imagination and fascination in the world we live in, and offers opportunities for reflection and debate over potential answers.



We encourage

children

to learn both from and about a range of world religions and involve our community as much as possible. Alongside celebrating Christian festivals, we also acknowledge other religious festivals, such as Diwali, Hanukkah and Eid. Pupils learn about such festivals through assemblies, their RE lessons and cross-phase immersion days. Pupils engage with religious artefacts such as kiddush cups, Challah cover and candlesticks when learning about Shabbat and trying on authentic Indian saris when learning about Diwali celebrations. We also take children to places of worship from a range of faiths in order to help them gain a deeper understanding of these religions. For example, EYFS/Key Stage One pupils visited Norwich

cathedral and mosque to find out more about places of worship within the Christian and Muslim faiths.



Our children are given time to pray when they want to talk with God, simply want to say thank you, or take time to reflect. Each classroom has a designated, interactive reflection area. Prayer also forms part of our daily routine at Elveden Academy, where our school prayer is read during daily acts of collective worship; children share a prayer before lunchtime; and children have reflection time at the end of each day. Prayers become part of our home learning and are displayed in the hall, our Spiritual Classroom, Well-being Garden and on our prayer tree.



Annual events and celebrations such as the EYFS and Key Stage One Nativity Performance and Key Stage Two leading the Christingle and Carol Service allow the children to reflect upon moments of awe and wonder.



We also consider the feelings and challenges faced by others, both locally and around the world. As a school community, we support local and world-wide charities through bake sales, donating to local 'Growkids' clothes banks and visiting food banks. We also support national charities, such as Children in Need; Sport Relief; British Heart Foundation and Young Minds through annual events organised each year. We visit St Andrew and St Patrick church with our Harvest Festival Donations and also Thetford's food bank. This year we have donated aid boxes to those suffering in Ukraine.



Our pupils are encouraged to stop and reflect on the wonder of the world around them, whether it's the birth of a baby chick, or the growth of a vegetable from a few seeds. For example, our Eco Warriors club, visits from local farmers, teaches our pupils how to grow, cultivate and cook with home grown produce; our Forest School and outdoor learning curriculum teaches pupils about the wonders of the great outdoors; and our EYFS pupils

learn about agriculture and plants, growing their own fruits and vegetables as part of their Down on the Farm topic.



Our curriculum is creative and provides opportunities for children to use their imagination in their learning. Hooks, drama and role play are used to provide active immersion in learning to encourage the best of outcomes. Teachers actively plan for such experiences, indicating links to spiritual development to ensure coverage.



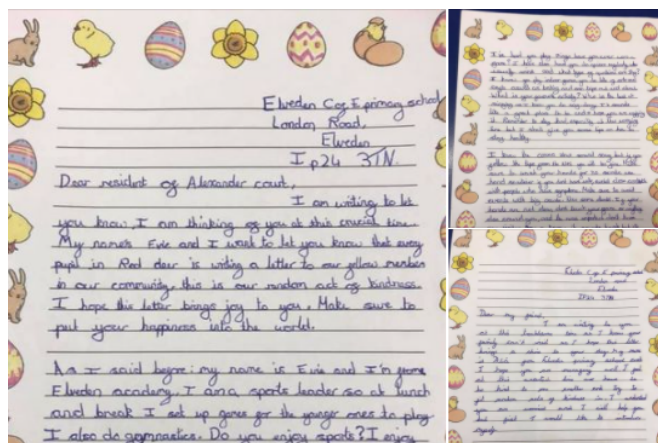
Children are given opportunities to reflect on their experiences in a wide range of different ways; from evaluating their own learning to reflecting on their own and others' beliefs and values, to sharing their discoveries with other pupils and parents. During class projects, whole school projects and home projects pupils often reflect on big and complex questions and engage in cross-curricular learning.



Our Forest School curriculum encourages our children to explore the great outdoors and step out of the classroom. Mrs Sanders and Mrs Maguire, our qualified Forest School teachers, plan outdoor learning opportunities across the curriculum, offering pupils hands-on activities to further understand the world around them. Pupils learn to take risks safely and develop life-skills such as fire safety and teamwork, as well as taking part in creative activities using natural materials.



Our Collective Worship School Council, supported by Mrs Rourke, also encourages children throughout school to think about how we can improve and take care of our school, our community and our world further. They lead on initiatives such as Anti-Bullying Week, raising money for the Royal British Legion for Remembrance, creating mindfulness and wellbeing assemblies for Children’s Mental Health Week and forging links with local charities by taking in food donations to give to those less fortunate and writing to the elderly in our local care home.



Enhancing Children's Moral Development at Elveden C of E Academy

The moral development of pupils is shown by their:

- Ability to recognise the difference between right and wrong, readily applying this understanding to their own lives and, in so doing, respect the civil and criminal law of England;
- Understanding the consequences of their behaviour and actions;
- Interest in investigating and offering reasoned views about moral and ethical issues, and being able to understand and appreciate the viewpoints of others on these issues.

At Elveden Academy, our children are given clear guidance on the difference between right and wrong in a wide variety of ways. Our Building Learning Power and core values help to remind the pupils of their expectations on how to behave and focuses on a positive approach to behaviour. The children are asked regularly to reflect on their behaviour and choices against our values.

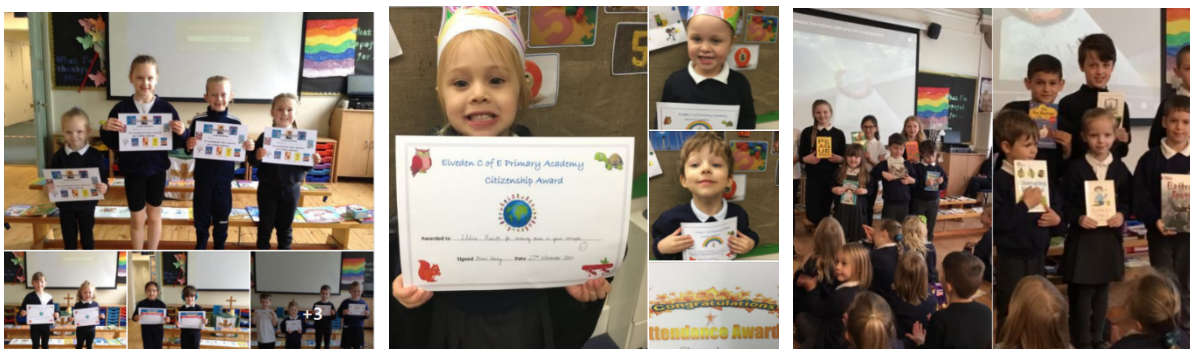


Each class sets their own rules in the form of a class charter, created through discussion with the pupils. Children are encouraged to reflect on their own behaviour and at playtimes our Key Stage Two Play Team mediate disputes while also leading games and activities alongside our Sports Leaders. Our behaviour policy clearly sets out how we manage children's behaviour and tackle inappropriate behaviour in a consistent way. Children are given warnings and reflect on what they have done to consider how they can resolve the situation.

Excellent behaviour and attitudes are rewarded through the following:

- Dojo points: awarded for teamwork, sportsmanship, helping others, displaying Christian value.
- Dojo box prize; awarded for children who have earned the most Dojo points in class each week.
- Themed stickers; awarded for showing any of the termly focus values such as Respect, Peace, Hope, Trust.
- BLP certificates; awarded by teachers for brilliant achievements in the classroom.
- Citizenship Award; awarded to children demonstrating how they have been a good citizen.
- Hot Chocolate Friday; awarded to those who have gone above and beyond each week, they celebrate with the Headteacher and have a hot chocolate treat.
- Book prizes; these children received a book prize at the end of each half term for completing their weekly Racing to Read and demonstrating consistently good behaviour.
- Elveden Achievers Cup; this is awarded at the end of the academic year to a child from the school who has gone the extra mile to show that they are a wonderful citizen and live by the values we hold highest. The child has their name engraved on the cup and returns it the following year to present to the next winner.

Children are celebrated each week during our celebration assemblies. Pupils nominated for awards are invited to sit at the front of the assembly hall where the whole school, can hear all about their excellent achievements, which are published on our social media sites for parents to enjoy. Pupils are encouraged to share their achievements first-hand. Out of school achievements such as sporting activities, competition entries and interesting hobbies are also celebrated through our termly Elveden's Achievers Magazine.



Our Key Stage Two pupils take on other Young Leaders roles within school where they can influence decisions made in school and ensure that the pupil voice is heard. Pupils develop leadership skills such as organisation, communication and teamwork, as well as helping to build confidence and self-esteem as they take on responsibility for leading their peers and younger children. At Elveden Academy our children take ownership of taking care of our school through taking responsibility for roles such as:

- Play Team – help to encourage happy and sociable playtimes
- Sports Leaders – organise and lead sporting activities at playtimes
- Collective Worship School Council – prepare the interactive whiteboard, manage the laptop and sort the music during assemblies and collective worship, prepare assemblies, services and fund-raising events
- Eco Warrior Committee – awareness of reducing, recycling and managing waste
- Digital Leaders - children with a passion for technology who want to share their knowledge with others and promote the use of all things digital throughout the school.

Children are also taught about fundamental British Values and are encouraged to express and listen to others' views through Jigsaw lessons and across the curriculum. Speaking and listening is highly regarded at Elveden Academy and is encouraged from the beginning of their school journey through Show and Tell to leading assemblies, classroom debates and performing in front of audiences for our Christmas and summer performances as they progress through Key Stage 2. Mrs Syer organises 'Parliament Week' each year and ensures children learn about how laws are made and the importance of parliament in our country's history and future.



Moral and ethical issues are explored widely through assemblies, literacy, history and a wide range of other subjects and activities. Giving children time to consider an issue from both sides is an important part of their education and could include a moral dilemma in a text or topic, such as the impact of deforestation and climate change as part of whole school projects or reflecting upon leadership qualities in The Story of Moses in RE. Whole school events such as taking part in Earth Day and Remembrance also enable us to explore moral issues in greater depth and across all age groups. We also reflect upon current affairs, such as the recent COP26 Climate Change Summit in assemblies and classrooms.



Enhancing Children's Social Development at Elveden C of E Academy

The social development of pupils is shown by their:

- Use of a range of social skills in different contexts, including working and socialising with pupils from different religious, ethnic and socio-economic backgrounds;
- Willingness to participate in a variety of communities and social settings, including by volunteering, cooperating well with others and being able to resolve conflicts effectively;
- Acceptance and engagement with the fundamental British values of democracy, the rule of law, individual liberty and mutual respect and tolerance of those with different faiths and beliefs; the pupils develop and demonstrate skills and attitudes that will allow them to participate fully in and contribute positively to life in modern Britain.

At Elveden Academy we believe that children need to have opportunities to develop their social skills in a range of different contexts. They achieve this through working cooperatively with a wide range of people - some familiar to them and some unfamiliar, some within the school community and some beyond. Staff and parents recognise they all have a crucial role to play in ensuring they model appropriate behaviours and attitudes at all times.

The range of opportunities for working and socialising with others is extensive, but some of the examples include collaborative whole school projects, sports day, breakfast club and after school clubs, school fairs and charity fundraising events. Our BLP values help to ensure the children have a clear framework for how they treat others with respect and tolerance. Our Key Stage 2 pupils take on their Young Leader roles with responsibility, taking care of our younger pupils not only during playtimes and lunchtimes, but also as part of their roles and during events such as sports day.



Beyond the school gates, children have opportunities to explore and be a part of their local community – whether this is taking part in a sponsored fun run or memory walk or playing for their local sports team. We are incredibly proud of our children’s behaviour and attitudes when they are out of school and frequent feedback from members of the public highlights the wonderful role models they are.



Children are given a range of responsibilities as they go through the school and these develop from classroom monitors to ensure classrooms are kept tidy and well-presented, to library monitors and sports leaders in Key Stage Two. We have also worked with Brandon Creative Forum and created various art work to be displayed in the local town to mark events such as the Christmas light switch on.



Pupils are encouraged to explore the faith and beliefs of people from a range of different cultures and religions through visitors and trips as part of Religious Education as well as topics linked to geography and PSHE. Joint events with other schools in our Multi-Academy Trust and our family of schools, such as sporting and cultural events also provide opportunities to share experiences and social skills. Pupils have also made links with Chitipi Primary School in Malawi, sending donations, writing and receiving letters.



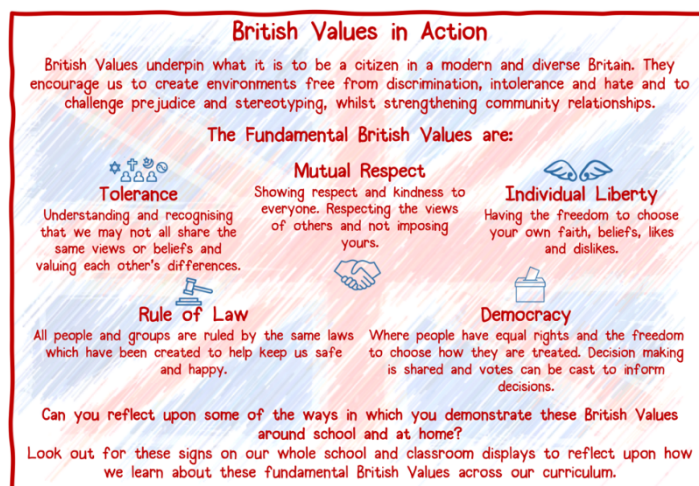
As a church school, **Christian Values** are reflected in nearly everything we do and influence how we treat each other. These values are not exclusively Christian but when brought together help to make our school the church school that it is.

The values which our school focus on are: Hope, Trust, Respect, Forgiveness



Each half term we focus on a particular value through our assemblies and collective worship to help children explore what they represent and what they mean to them. During this time, we focus on values such as truth, perseverance, responsibility, peace, friendship, compassion, generosity, thankfulness, humility, courage, wisdom and justice. Children across all classes spend time discussing their reflections to further explore their response to the key messages explored in collective worship and RE lessons.

These support and link to the fundamental British Values of democracy, the rule of law, individual liberty and mutual respect and tolerance of those with different faiths and beliefs.



At Elveden Academy, these are reinforced regularly in the following ways:

Democracy

Democracy is embedded at the school. Pupils are always listened to by adults and are taught to listen carefully and with concern to each other, respecting the right of every individual to have their opinions and voices heard. Pupils also have the opportunity to air their opinions and ideas through our Collective Worship School Council and regular questionnaires. Democracy is also an element of our PSHE curriculum 'Jigsaw' and during KS2 children have opportunities to explore democracy through the local and national political systems.

The Rule of Law

The importance of laws whether they are those that govern the class, the school or the country, are consistently reinforced. Our Christian values are deeply embedded and form the basis of our code of conduct. Each class also discusses and sets its own rules that are clearly understood by all and seen to be necessary to ensure that every class member is able to learn in a safe and ordered environment. Our pupils are taught the value and reasons behind laws, that they govern and protect us, the responsibilities that this involves and the consequences when laws are broken.

Individual Liberty

Within school, pupils are actively encouraged to make choices, knowing that they are in a safe and supportive environment. As a school we educate and provide boundaries for our pupils to make choices safely, through the provision of a safe environment and an empowering education. Our pupils are encouraged to know, understand and exercise their rights and personal freedoms and are advised how to exercise these safely; examples of this can be clearly seen in our e-safety lessons. Whether it is through choice of challenge; of how they record; of participation in our numerous extra-curricular activities; our pupils are given the freedom to make choices.

Mutual Respect

The pupils understand that respect is essential in order that we exist in harmony with each other. It is expected that respect is shown to everyone, whatever differences we may have and to everything, however big or small. The core value of Respect at Elveden Academy underpins our work every day both in and out of the classroom.

Tolerance of Those with Different Faiths and Beliefs

Our Christian value of Respect ensures tolerance of those who have different faiths and beliefs. Elveden Academy enhances pupils' understanding of different faiths and beliefs through religious education studies including visits to a range of places of worship and inviting pupils to talk about their own faith. Through this our pupils gain an enhanced understanding of their place in a culturally diverse society.

Enhancing Children's Cultural Development at Elveden C of E Academy

The cultural development of pupils is shown by their:

- Understanding and appreciation of the wide range of cultural influences that have shaped their own heritage and that of others;
- Understanding and appreciation of the range of different cultures within school and further afield as an essential element of their preparation for life in modern Britain;
- Knowledge of Britain's democratic parliamentary system and its central role in shaping our history and values, and in continuing to develop Britain;
- Willingness to participate in and respond positively to artistic, sporting and cultural opportunities;
- Interest in exploring, improving understanding of and showing respect for different faiths and cultural diversity, and the extent to which they understand, accept, respect and celebrate diversity, as shown by their tolerance and attitudes towards different religious, ethnic and socio-economic groups in the local, national and global communities.

At Elveden Academy we seek to provide opportunities for our pupils to explore and celebrate both their own cultural identity and that of those around them. This is achieved through a range of projects embedded within our curriculum, from celebrating Diwali to finding out about the importance of our local history, to encourage and foster pride in our schools surroundings, including the use of our new MUGA.



We also seek to give children an insight into the many traditions that are a part of our cultural history in the UK. This ranges from enjoying an annual pantomime in Bury St. Edmunds to Maypole dancing, as well as exploring the significance of events in British history such as Remembrance Day.



We are fortunate to have so many opportunities to explore the wide range of historical, artistic and sporting opportunities on our doorstep here in Suffolk. Children experience a wide range of music through taking part in Young Voices and when visiting the theatre on residential visits. All children have a weekly music lesson and children from Foundation to Year 6 have the opportunity to have musical tuition provided by external agencies. They all have opportunities to perform to parents, carers and our community through Key Stage One and Foundation Nativity and Key Stage Two Summer Production. This did not stop when COVID restrictions were in place, where our pupils sang, learnt Makaton signs and symbols to perform our virtual 2020 Nativity and Carol service!

Elveden C of E Primary Academy
 9 December 2021 · 🌐

🎵 It's beginning to look a lot like Christmas...
 Here is a sneak preview of our wonderful Squirrels and Foxes Nativity 🎄🌟
 Enjoy 🥰



Elveden C of E Primary Academy
 17 December 2021 · 🌐

Merry Christmas for Key Stage 2! We hope you love this as much as we enjoyed singing it 🥰



At Elveden Academy we are always proud of our sporting achievements and Mrs Maguire is always broadening the range of sports our children can take part in and appreciate. This includes hockey, gymnastics and football. We have made the most of our links with one of our local boxing trainers, who have provided after school clubs for our children. We also have links with Ipswich Town Football club who have also selected our girls football team to walk out on the home pitch at Portman Road as mascots later in the year!

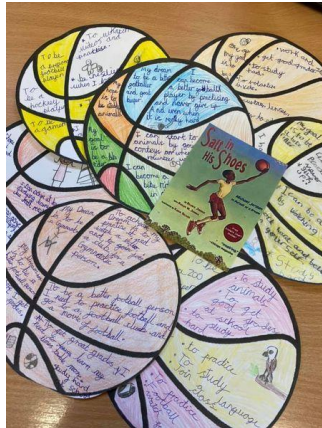


All of our classes also make the most of local visits including museums and galleries, to help support their learning across the curriculum, whether that's Norwich Theatre, Thetford Ancient House Museum, Lackford Lakes or Eaton Vale.



Respect for different faiths and cultures is a core part of our school mission and we strongly believe that by providing children with opportunities to explore and learn from the faiths, cultures and beliefs of those in the school community and beyond, underpinned by our Christian values. We believe this is fundamental to our children to grow into active citizens ready for life in the 21st Century. We prepare all children to make exceptional contributions to the global society and our curriculum enriches lives spiritually, culturally, emotionally and morally. It is important that our clearly communicated and lived out values are also understood at home, with the potential for our whole school community to be influenced and changed by them. It is this living out of our values which genuinely defines our school and makes us distinctive.

Our 'Jigsaw' PSHE curriculum also has direct links to spiritual, moral, social and cultural education, where each lesson plan links directly to at least one area of the requirements. Through these lessons, our aim is to equip our pupils with a healthy internal dialogue and resilient approach to life through high-quality learning opportunities which link closely to our school values and church-school ethos. Pupils engage in learning experiences told through stories to build healthy thinking, covering topics such as self-love, relationships with others, emotions, truthfulness and resilience.



At Elveden Academy we are strong believers that children thrive when learning through hands on experiences that feed their imagination, curiosity and growth. Each year we ensure they have the opportunity to take part in Activities Week and Mental Health projects including visits to Southwold seafont and Thetford Forest and taking part in group challenges that stretch their comfort zones and widen their knowledge.



For more up-to-date information on our curriculum and extensive links to pupils' spiritual, moral, social and cultural development, please visit our Twitter page:
<https://twitter.com/elvedenprimary>

Please also visit our school website to find out more about how our children '*let their light shine*' (Matthew 5:16) for today and the future:

<https://www.elveden.suffolk.sch.uk/web>